



Llantwit Major Photographic Club

26th April 2022

Homework #6

Missed from last week...
James Winter



Jason Hughes



Jason Hughes

Chloe Monaghan



Andy Mont



John Dudley



Rae Richards Hughes



Natalie Rogers



Kim Waite



Andrew Smith



James Winter



Fiona Barnard



Colin Davies



Kirsten Evans



Peter Dennis



Jane Cook



Kelley Howlett



Alison Deere



Graham Brain



Post processing workflow

People pictures....

Photographs and photographers that have inspired me

First ever photo
Joseph Nicéphore Niépce
1826



IKB
Taken 1847
Robert Howlett



Abraham Lincoln
Typical Photo
1865

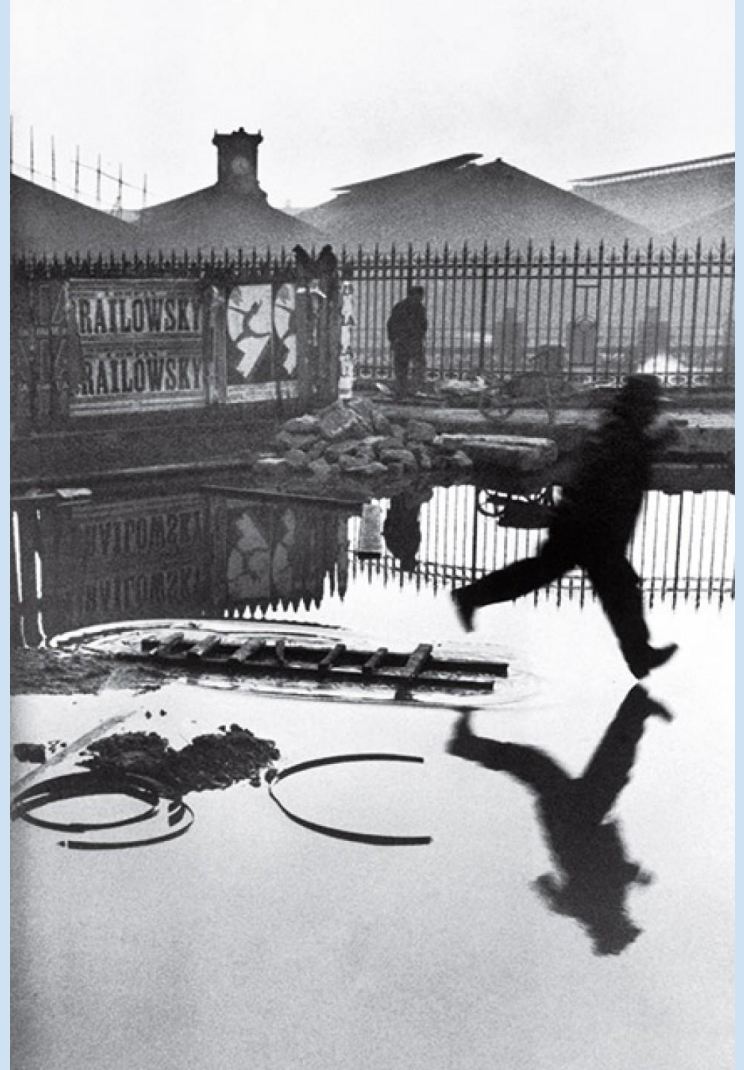


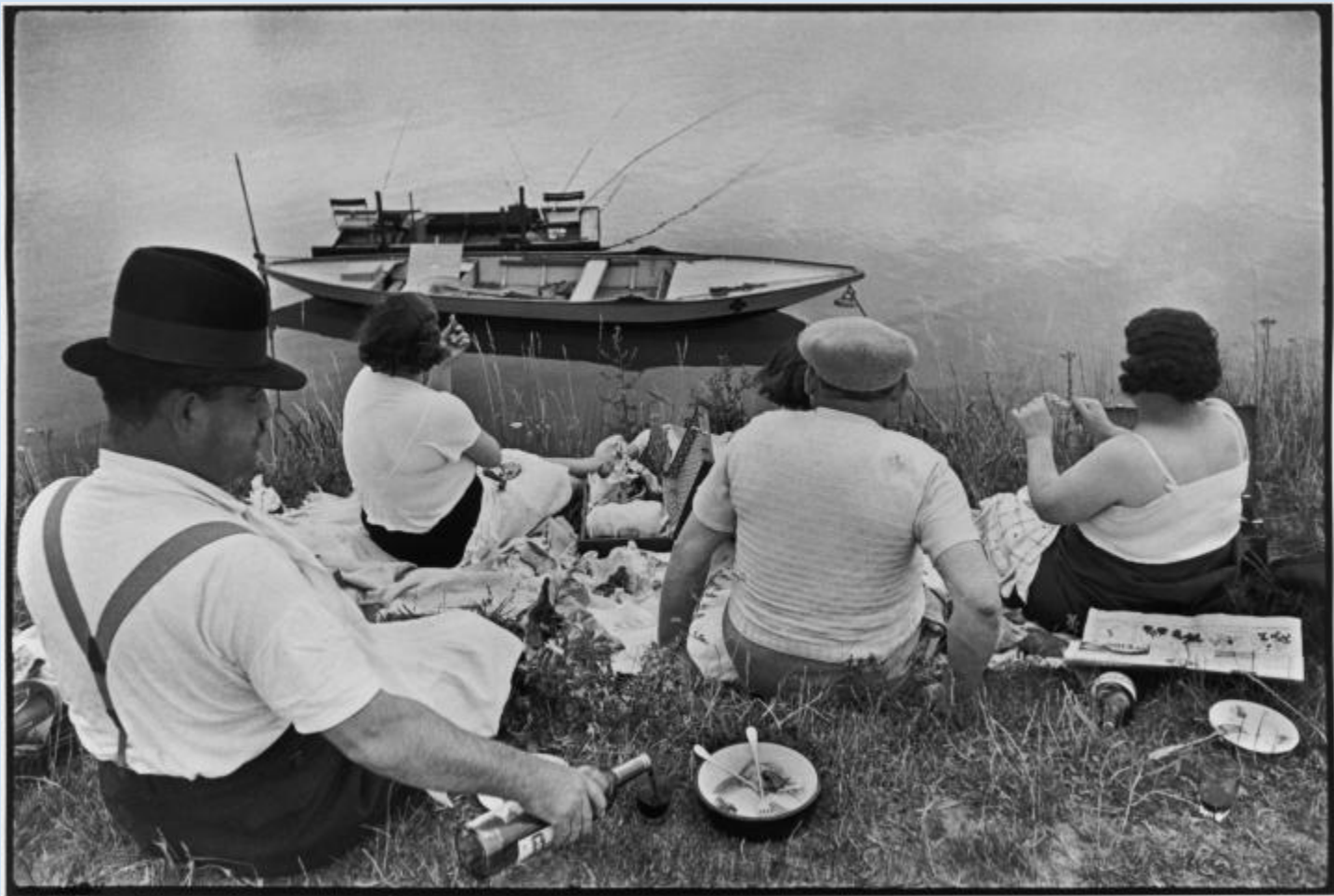
Julia Margaret Cameron 1815 -1879





Henri Cartier-Bresson
1908 - 2004







Robert Doisneau
1912 - 1994

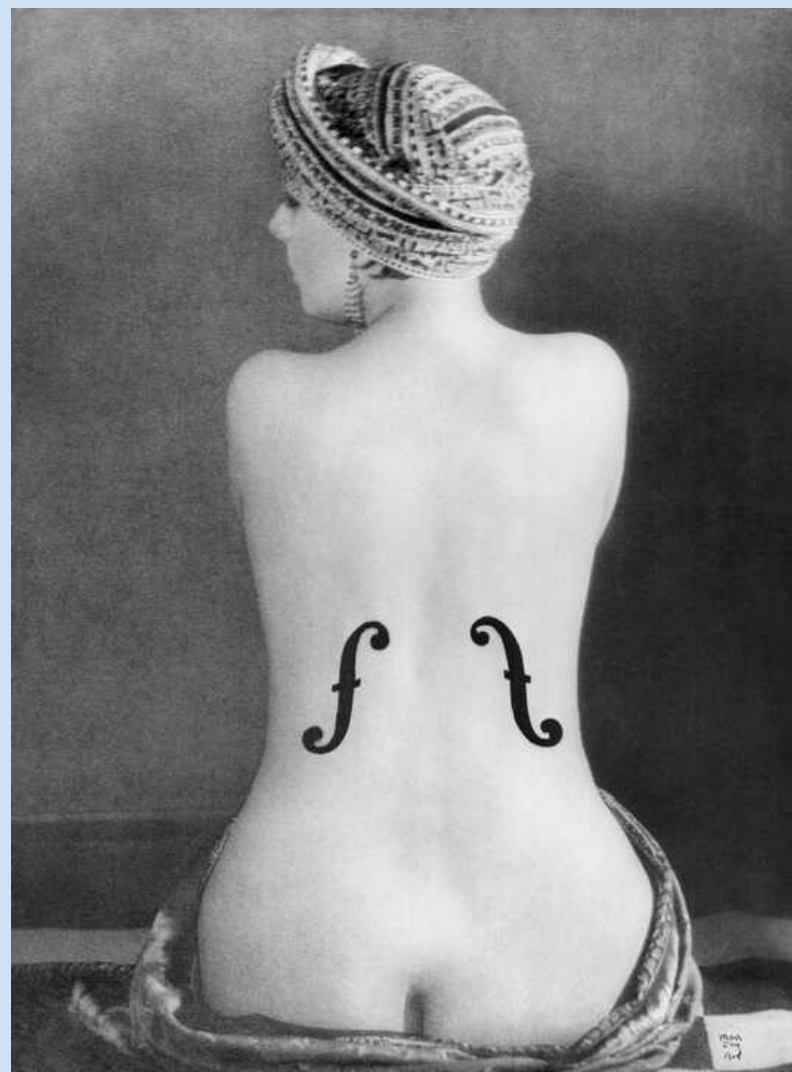




The Kiss
1950



Man Ray
1890 - 1976



Bert Hardy
1913 - 1995



Mona Lisa
Leonardo Da Vinci
1503 (started)



Sunflowers
Vincent van Gogh
1888



Girl with a pearl earring
Johannes Vermeer
1665



Che Guevara

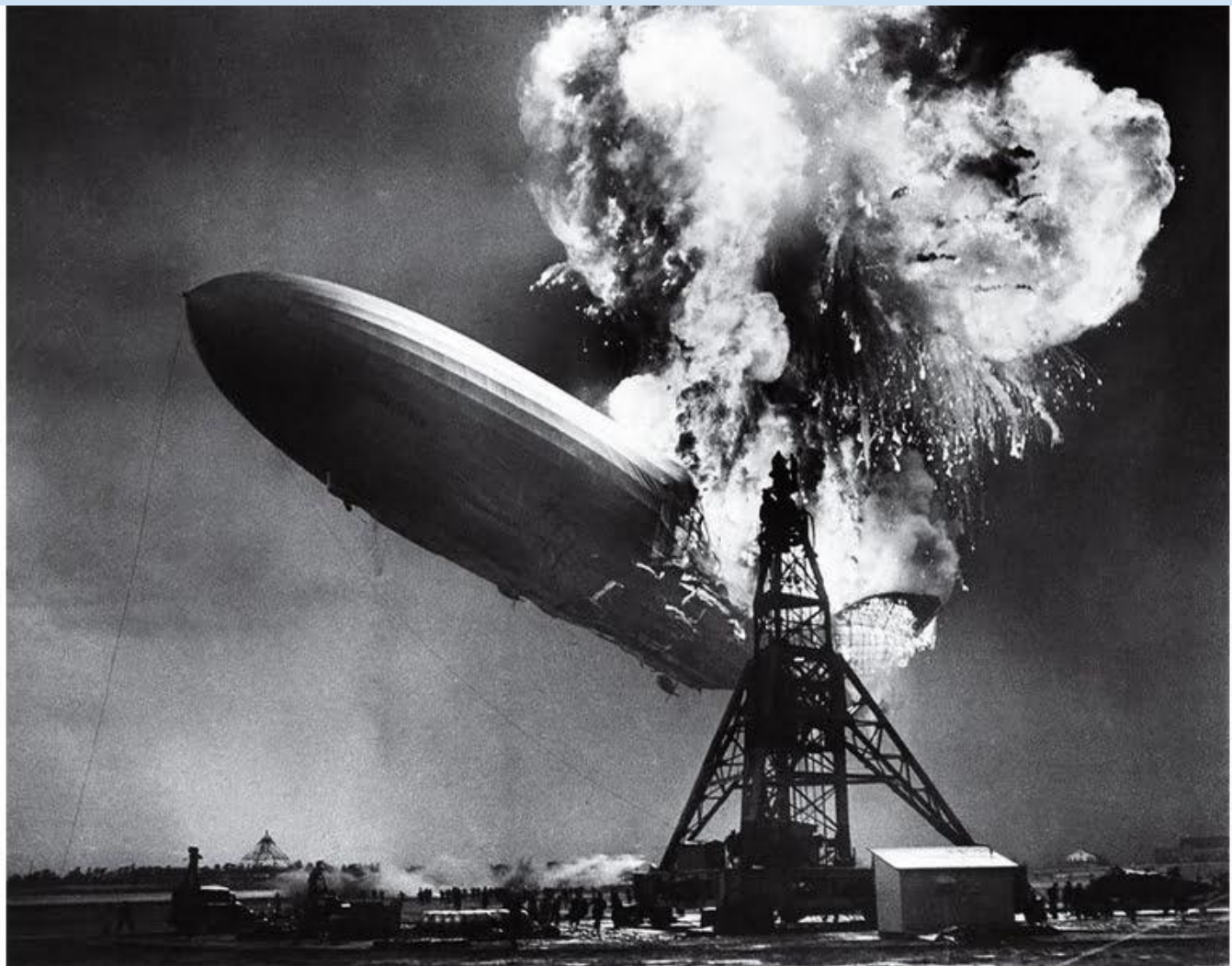
Alberto Korda
1960



Lunch atop a skyscraper
Charles Ebbets
1932



Hindenburg crash
Sam Shere
1937



Marilyn Monroe
Sam Shaw
1954



Bert Hardy
1913 - 1995







Bert Hardy



Bert - Hardy -





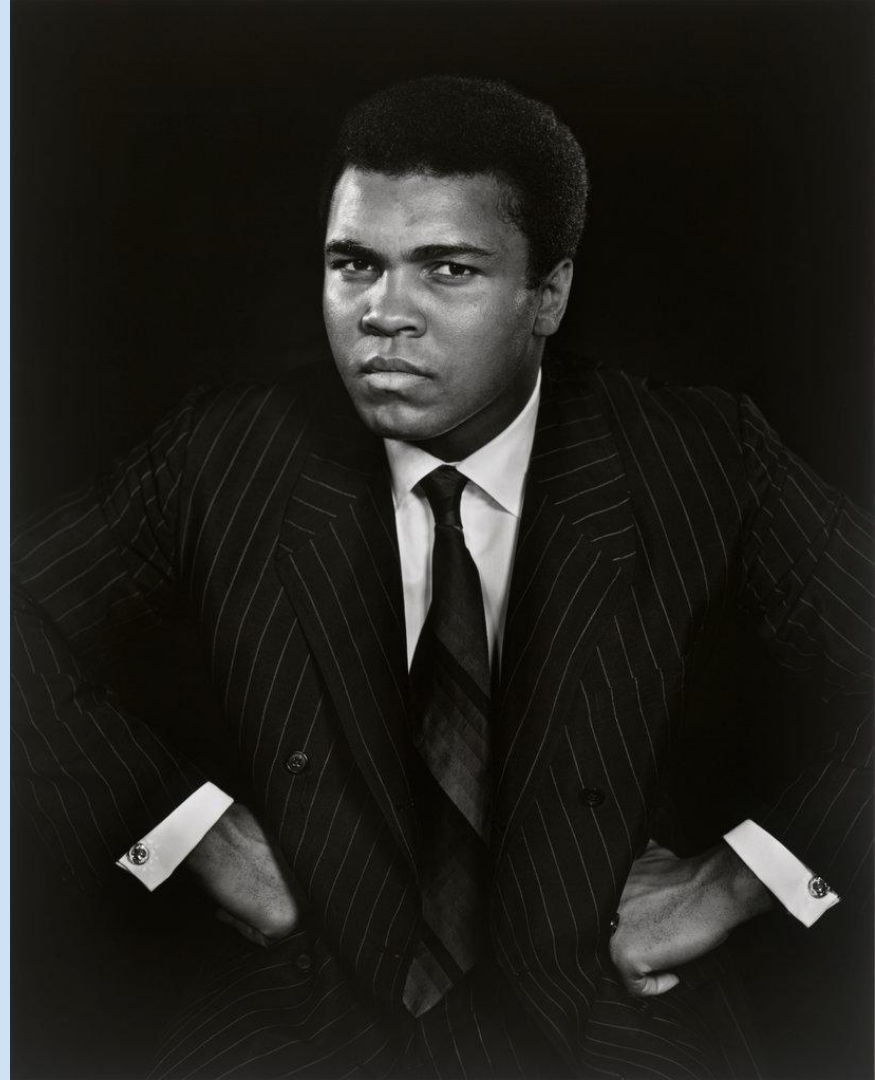
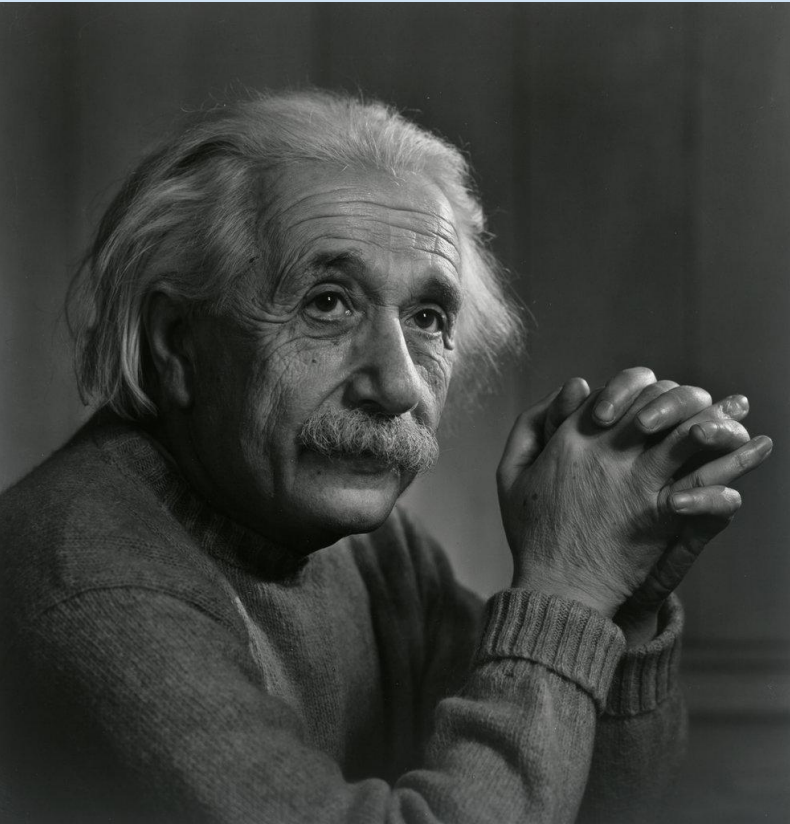
Bill Brandt
1904 - 1983







Karsh 1908 - 2002



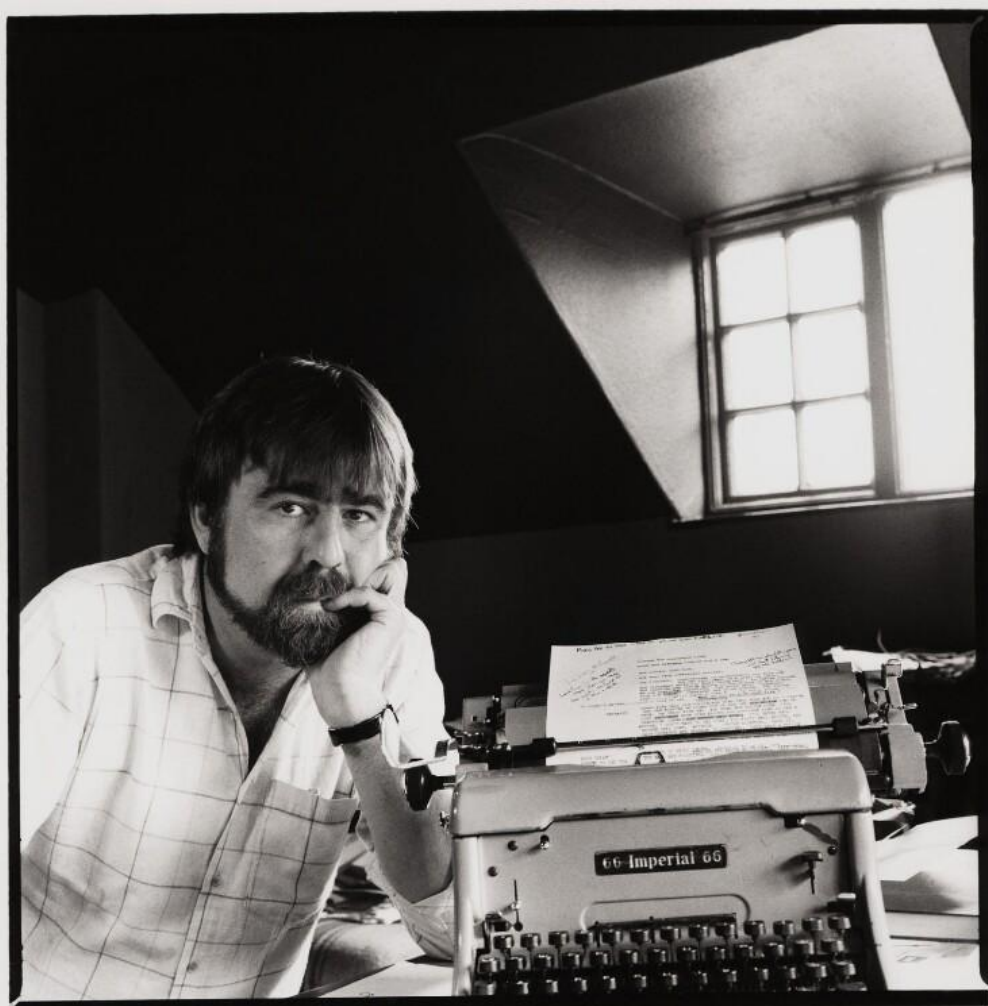
David Hurn
1934 -





Michael Birt
1953 -





Michael Birt. July 1983.

But I don't live completely in the past.....



Steepy Robot
Photography

Adrian Donoghue



Brooke Shaden



Alyn Wallace



Sharon Prenton Jones



Irene
Rudnyk



Ross McKelvey



The End

Phew....

Break

Hints/Tips

JPEG vs RAW

Skills

HOW IT WORKS



Most cameras have a button with this symbol on it.



Other cameras have a dial that you turn to change exposure.

These values are measured in stops, which can be half or double the amount of light recorded by the camera. So, a photograph shot at +1 exposure compensation will have recorded twice as much light as a photograph shot at 0.



-3 . . -2 . . -1 . . 0 . . +1 . . +2 . . +3

EXPOSURE COMPENSATION IN DIFFERENT CAMERA MODES

High Key Photography

- Use a light/white background
- Use as much light as possible e.g. open doors/windows, turn on lights
- Try and get 360 degree lighting
- Keep your ISO as low as possible
- Static objects are best to start with



Homework #7 - High Key



Post one image onto the Facebook group & tag it with #LMPC007

All entries by 5pm Sunday 8th May please

Please take NEW images and don't just send out old images - this is about practicing skills



Not on facebook? Email them to lmpc-email@googlegroups.com using #LMPC007 as the subject.

Club meeting #8

What to expect!

- Competition #1 critique
- Skill/hints/homework

